

**Aurora-C Antibody (C-term)**  
**Purified Rabbit Polyclonal Antibody (Pab)**  
**Catalog # AP7000c**

**Specification**

---

**Aurora-C Antibody (C-term) - Product Information**

Application	WB,E
Primary Accession	<a href="#">O9UQB9</a>
Reactivity	Human
Host	Rabbit
Clonality	Polyclonal
Isotype	Rabbit IgG
Antigen Region	220-250

**Aurora-C Antibody (C-term) - Additional Information**

**Gene ID** 6795

**Other Names**

Aurora kinase C, Aurora 3, Aurora/IPL1-related kinase 3, ARK-3, Aurora-related kinase 3, Aurora/IPL1/Eg2 protein 2, Serine/threonine-protein kinase 13, Serine/threonine-protein kinase aurora-C, AURKC, AIE2, AIK3, AIRK3, ARK3, STK13

**Target/Specificity**

This Aurora-C antibody is generated from rabbits immunized with a KLH conjugated synthetic peptide between 220-250 amino acids from the C-terminal region of human Aurora-C.

**Dilution**

WB~~~1:1000

E~~~Use at an assay dependent concentration.

**Format**

Purified polyclonal antibody supplied in PBS with 0.09% (W/V) sodium azide. This antibody is purified through a protein A column, followed by peptide affinity purification.

**Storage**

Maintain refrigerated at 2-8°C for up to 2 weeks. For long term storage store at -20°C in small aliquots to prevent freeze-thaw cycles.

**Precautions**

Aurora-C Antibody (C-term) is for research use only and not for use in diagnostic or therapeutic procedures.

**Aurora-C Antibody (C-term) - Protein Information**

**Name** AURKC

**Synonyms** AIE2, AIK3, AIRK3, ARK3, STK13

**Function** Serine/threonine-protein kinase component of the chromosomal passenger complex (CPC), a complex that acts as a key regulator of mitosis. The CPC complex has essential functions at the centromere in ensuring correct chromosome alignment and segregation and is required for chromatin-induced microtubule stabilization and spindle assembly. Also plays a role in meiosis and more particularly in spermatogenesis. Has redundant cellular functions with AURKB and can rescue an AURKB knockdown. Like AURKB, AURKC phosphorylates histone H3 at 'Ser-10' and 'Ser-28'. AURKC phosphorylates the CPC complex subunits BIRC5/survivin and INCENP leading to increased AURKC activity. Phosphorylates TACC1, another protein involved in cell division, at 'Ser-228'.

#### Cellular Location

Nucleus. Chromosome. Chromosome, centromere. Cytoplasm, cytoskeleton, spindle.

Note=Distributes in the condensed chromosomes during prophase to metaphase. After entering anaphase, there is a dissociation from separated chromosomes and a redistribution to midzone microtubules, and finally remains in the midbody during cytokinesis.

#### Tissue Location

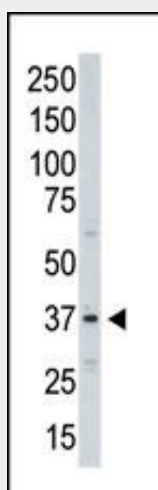
Isoform 1 and isoform 2 are expressed in testis. Elevated expression levels were seen only in a subset of cancer cell lines such as Hep-G2, Huh-7 and HeLa. Expression is maximum at M phase

### Aurora-C Antibody (C-term) - Protocols

Provided below are standard protocols that you may find useful for product applications.

- [Western Blot](#)
- [Blocking Peptides](#)
- [Dot Blot](#)
- [Immunohistochemistry](#)
- [Immunofluorescence](#)
- [Immunoprecipitation](#)
- [Flow Cytometry](#)
- [Cell Culture](#)

### Aurora-C Antibody (C-term) - Images



The anti-Aurora-C C-term Pab (Cat. #AP7000c) is used in Western blot to detect Aurora C in A375 cell lysate.

### Aurora-C Antibody (C-term) - Background

Chromosomal segregation during mitosis as well as meiosis is regulated by kinases and phosphatases. The Aurora kinases, members of the Ser/Thr protein kinase family, associate with microtubules during chromosome movement and segregation. Aurora kinase C may play a part in organizing microtubules in relation to the function of the centrosome/spindle pole during mitosis. This protein is localized to centrosome from anaphase to cytokinesis. Expression is limited to testis in normal cells. Elevated expression levels are seen only in a subset of cancer cells such as HepG2, HuH7 and HeLa cells. Aurora-C expression is maximum at M phase.

#### **Aurora-C Antibody (C-term) - References**

Kimura, M., et al., J. Biol. Chem. 274(11):7334-7340 (1999).  
Tseng, T.C., et al., DNA Cell Biol. 17(10):823-833 (1998).  
Bernard, M., et al., Genomics 53(3):406-409 (1998).

#### **Aurora-C Antibody (C-term) - Citations**

- [Cloning and characterization of a novel human Aurora C splicing variant.](#)